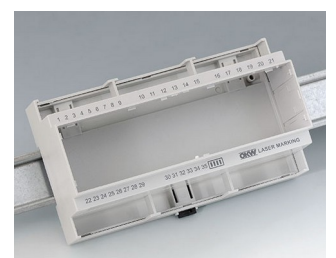
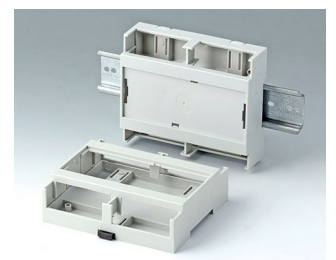
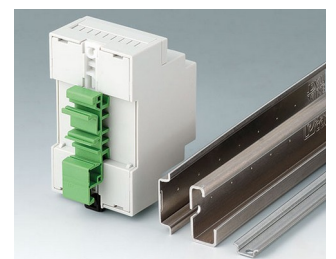
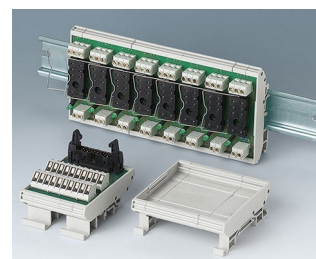
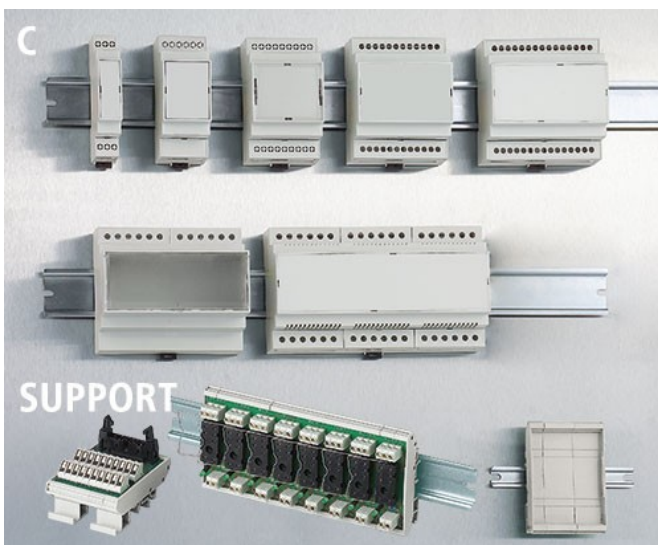


RAILTEC C

Boitiers modulaires pour rails DIN et supports de composants

Gamme de boitiers complète tant pour la fixation sur rail DIN EN 60715 que pour une installation directement au mur. tous les types offrent de grandes facilités de montage pour la mise en place de composants et les travaux de raccordement ! Les supports permettant un montage individuel des composants et offrant une plus grande souplesse grâce à un remplacement facile des interfaces font également partie du programme.

- excellentes propriétés du matériau qui permet une utilisation dans des con-ditions rudes avec une très bonne résistance à la température (UL 94 V-0)
- assemblage par simple emboîtement des éléments du boitier
- **RAILTEC C** : pour borniers à circuits imprimés, réglettes à broches et connecteurs enfichables par l'avant ; cadre optionnel pour placer un circuit imprimé supplémentaire ; différentes versions de plaques avant et de couvercles ; largeurs de module 1-12 ; pour rails DIN EN 60715 TH35 ; positionnement des circuits imprimés avec trois orientations possibles ; adaptateur pour TH15 et G32 (1 à 4 modules) en accessoire
- Version I partie frontale ouverte, côté raccordement avec passage libre, sans fentes d'aération
- Version II partie frontale ouverte, côté raccordement avec passage libre, avec fentes d'aération
- Version III partie frontale ouverte, côté raccordement avec paroi de boitier prolongée, sans fentes d'aération
- Version IV partie frontale fermée, côté raccordement avec passage libre, sans fentes d'aération
- **RAILTEC SUPPORT** : support de modules électroniques de construction modulaire pour un montage individuel des composants ; pour rails DIN EN 60715 TH35, TH15 et G32
- degré de protection < IP 40



RAILTEC C

Modifications spécifiques client

De quoi avez-vous besoin pour réaliser un produit entièrement personnalisé ? Si vous le souhaitez, nous vous fournissons les boîtiers et boutons prêts à l'encastrement, toutes modifications et finitions demandées comprises. Options de personnalisation pour Railtec C



Usinage mécanique



Peinture



Impression



Marquage laser



Étiquette, Films de décoration graphique



Assemblage/montage

Versions



B6700100
RAILTEC C, 1 module, Vers. I
PC (UL 94 V-0)
gris clair
17,5x90x58mm



B6700102
RAILTEC C, 1 module, Vers. II
PC (UL 94 V-0)
gris clair
17,5x90x58mm



B6700104
RAILTEC C, 1 module, Vers. III
PC (UL 94 V-0)
gris clair
17,5x90x58mm



B6700106
RAILTEC C, 1 module, Vers. IV
PC (UL 94 V-0)
gris clair
17,5x90x58mm



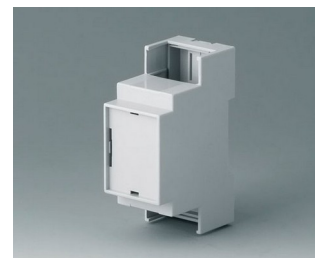
B6701100
RAILTEC C, 2 modules, Vers. I
PC (UL 94 V-0)
gris clair
36x90x58mm



B6701102
RAILTEC C, 2 modules, Vers. II
PC (UL 94 V-0)
gris clair
36x90x58mm

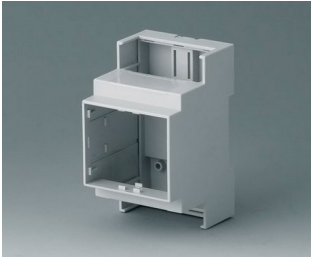


B6701104
RAILTEC C, 2 modules, Vers. III
PC (UL 94 V-0)
gris clair
36x90x58mm

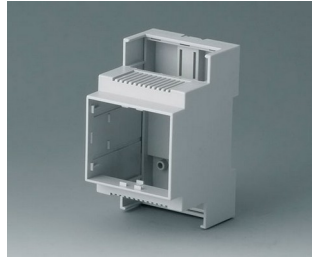


B6701106
RAILTEC C, 2 modules, Vers. IV
PC (UL 94 V-0)
gris clair
36x90x58mm

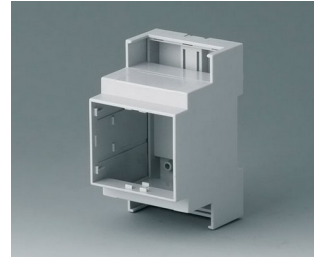
RAILTEC C



B6702100
RAILTEC C, 3 modules, Vers. I
PC (UL 94 V-0)
gris clair
53x90x58mm



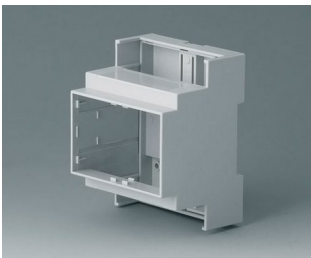
B6702102
RAILTEC C, 3 modules, Vers. II
PC (UL 94 V-0)
gris clair
53x90x58mm



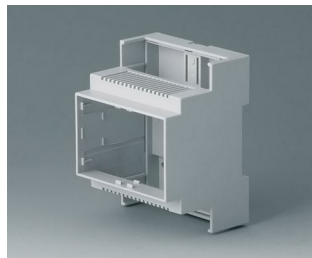
B6702104
RAILTEC C, 3 modules, Vers. III
PC (UL 94 V-0)
gris clair
53x90x58mm



B6702106
RAILTEC C, 3 modules, Vers. IV
PC (UL 94 V-0)
gris clair
53x90x58mm



B6703100
RAILTEC C, 4 modules, Vers. I
PC (UL 94 V-0)
gris clair
71x90x58mm



B6703102
RAILTEC C, 4 modules, Vers. II
PC (UL 94 V-0)
gris clair
71x90x58mm



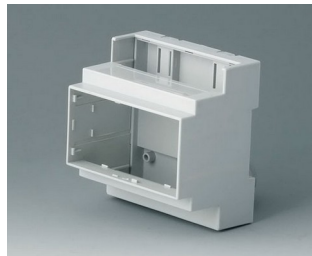
B6703104
RAILTEC C, 4 modules, Vers. III
PC (UL 94 V-0)
gris clair
71x90x58mm



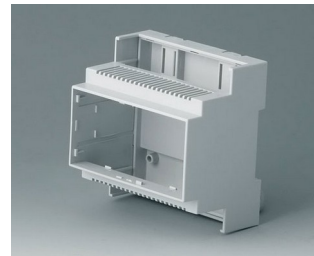
B6703106
RAILTEC C, 4 modules, Vers. IV
PC (UL 94 V-0)
gris clair
71x90x58mm



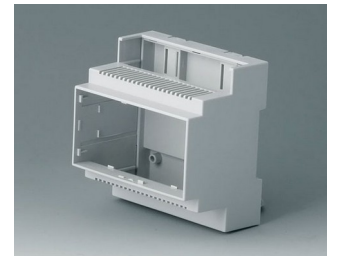
B6704100
RAILTEC C, 5 modules, Vers. I
PC (UL 94 V-0)
gris clair
88x90x58mm



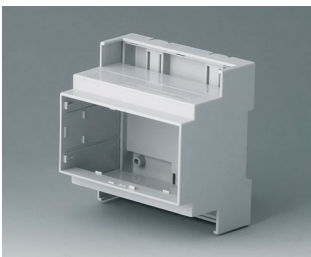
B6704101
RAILTEC C, 5 modules, Vers. I
PC (UL 94 V-0)
gris clair
88x90x58mm



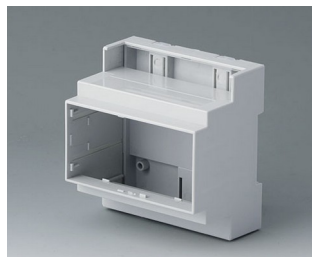
B6704102
RAILTEC C, 5 modules, Vers. II
PC (UL 94 V-0)
gris clair
88x90x58mm



B6704103
RAILTEC C, 5 modules, Vers. II
PC (UL 94 V-0)
gris clair
88x90x58mm



B6704104
RAILTEC C, 5 modules, Vers. III
PC (UL 94 V-0)
gris clair
88x90x58mm



B6704105
RAILTEC C, 5 modules, Vers. III
PC (UL 94 V-0)
gris clair
88x90x58mm

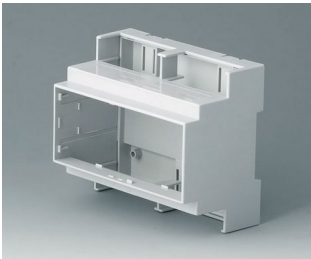


B6704106
RAILTEC C, 5 modules, Vers. IV
PC (UL 94 V-0)
gris clair
88x90x58mm

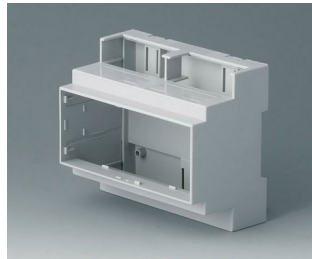


B6704107
RAILTEC C, 5 modules, Vers. IV
PC (UL 94 V-0)
gris clair
88x90x58mm

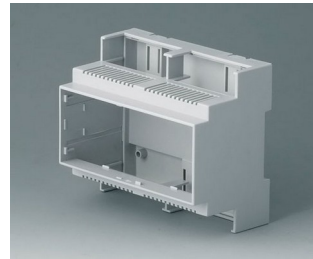
RAILTEC C



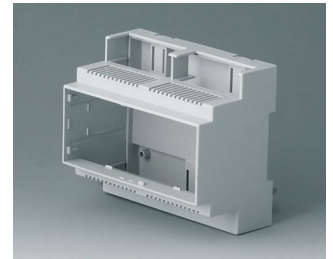
B6705100
RAILTEC C, 6 modules, Vers. I
PC (UL 94 V-0)
gris clair
106x90x58mm



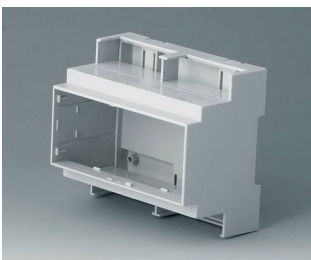
B6705101
RAILTEC C, 6 modules, Vers. I
PC (UL 94 V-0)
gris clair
106x90x58mm



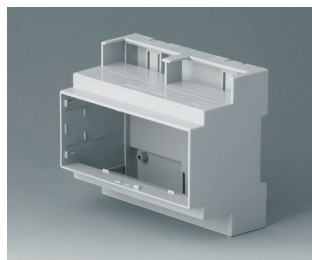
B6705102
RAILTEC C, 6 modules, Vers. II
PC (UL 94 V-0)
gris clair
106x90x58mm



B6705103
RAILTEC C, 6 modules, Vers. II
PC (UL 94 V-0)
gris clair
106x90x58mm



B6705104
RAILTEC C, 6 modules, Vers. III
PC (UL 94 V-0)
gris clair
106x90x58mm



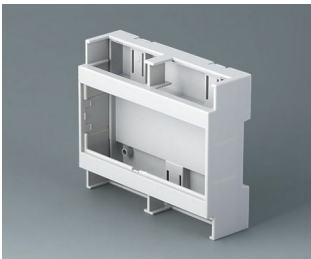
B6705105
RAILTEC C, 6 modules, Vers. III
PC (UL 94 V-0)
gris clair
106x90x58mm



B6705106
RAILTEC C, 6 modules, Vers. IV
PC (UL 94 V-0)
gris clair
106x90x58mm



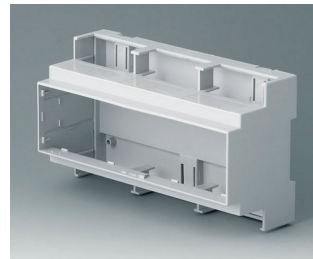
B6705107
RAILTEC C, 6 modules, Vers. IV
PC (UL 94 V-0)
gris clair
106x90x58mm



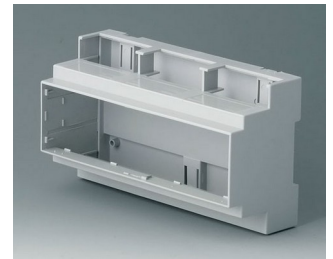
B6705800
RAILTEC C, 6 modules, plate,
Vers. I
PC (UL 94 V-0)
gris clair
106,2x90x32mm



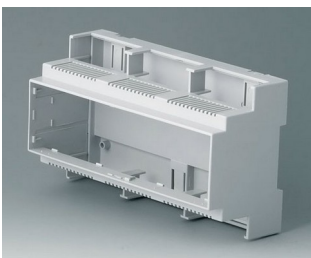
B6705806
RAILTEC C, 6 modules, plate,
Vers. IV
PC (UL 94 V-0)
gris clair
106,2x90x32mm



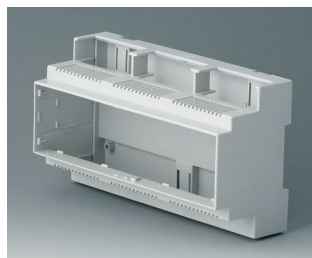
B6706100
RAILTEC C, 9 modules, Vers. I
PC (UL 94 V-0)
gris clair
160x90x58mm



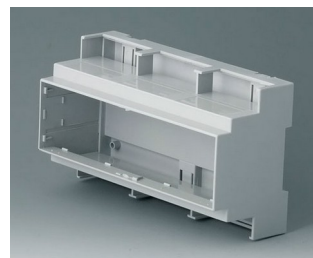
B6706101
RAILTEC C, 9 modules, Vers. I
PC (UL 94 V-0)
gris clair
160x90x58mm



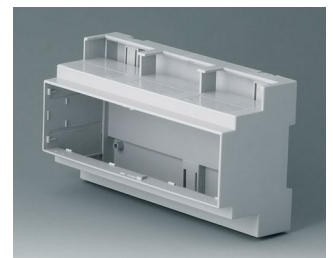
B6706102
RAILTEC C, 9 modules, Vers. II
PC (UL 94 V-0)
gris clair
160x90x58mm



B6706103
RAILTEC C, 9 modules, Vers. II
PC (UL 94 V-0)
gris clair
160x90x58mm

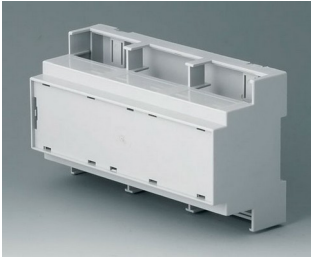


B6706104
RAILTEC C, 9 modules, Vers. III
PC (UL 94 V-0)
gris clair
160x90x58mm

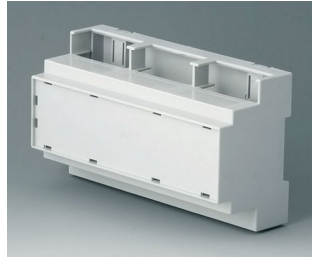


B6706105
RAILTEC C, 9 modules, Vers. III
PC (UL 94 V-0)
gris clair
160x90x58mm

RAILTEC C



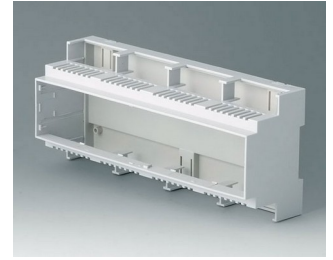
B6706106
RAILTEC C, 9 modules, Vers. IV
PC (UL 94 V-0)
gris clair
160x90x58mm



B6706107
RAILTEC C, 9 modules, Vers. IV
PC (UL 94 V-0)
gris clair
160x90x58mm



B6707100
RAILTEC C, 12 modules, Vers. I
PC (UL 94 V-0)
gris clair
210x90x58mm



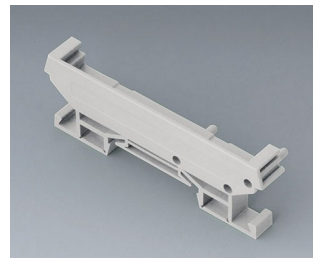
B6707102
RAILTEC C, 12 modules, Vers. II
PC (UL 94 V-0)
gris clair
210x90x58mm



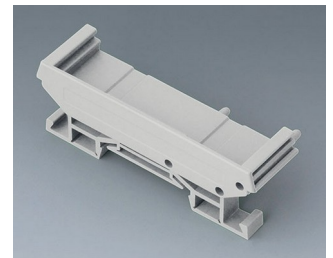
B6724333
RAILTEC SUP. 72, pièce
terminale
PA 6 (30) (UL 94 V-0)
gris clair
82x11,2x16mm



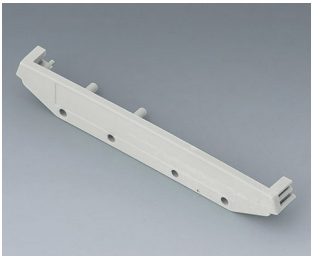
B6724334
RAILTEC SUP. 72, pièce
terminale
PA 6 (30) (UL 94 V-0)
gris clair
82x22,2x16mm



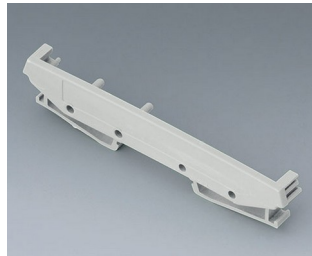
B6724335
RAILTEC SUP. 72, pièce
terminale + pied
PA 6 (30) (UL 94 V-0)
gris clair
82x11,2x22,5mm



B6724336
RAILTEC SUP. 72, pièce
terminale + pied
PA 6 (30) (UL 94 V-0)
gris clair
82x22,2x22,5mm



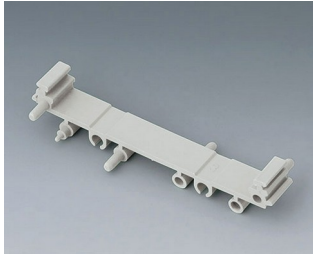
B6724444
RAILTEC SUP. 107, pièce
terminale
PA 6 (30) (UL 94 V-0)
gris clair
118x11,5x17,5mm



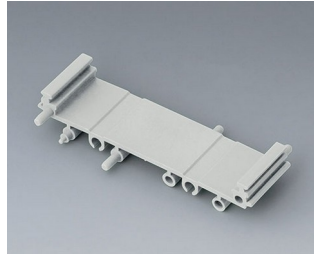
B6724445
RAILTEC SUP. 107, pièce
terminale + pied
PA 6 (30) (UL 94 V-0)
gris clair
118x11,5x27,5mm

RAILTEC C

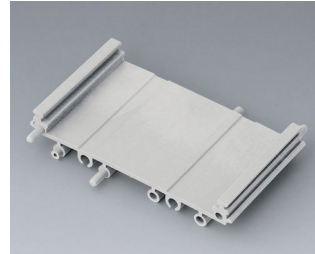
Composants du système pour compléter



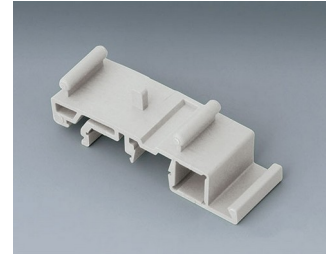
B6724330
RAILTEC SUP. 72, partie intermédiaire
PA 6 (30) (UL 94 V-0)
gris clair
82x11,25x16mm



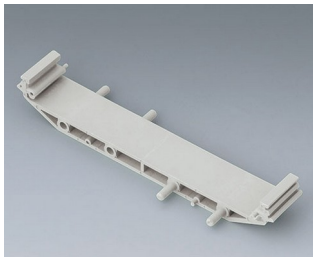
B6724331
RAILTEC SUP. 72, partie intermédiaire
PA 6 (30) (UL 94 V-0)
gris clair
82x22,5x16mm



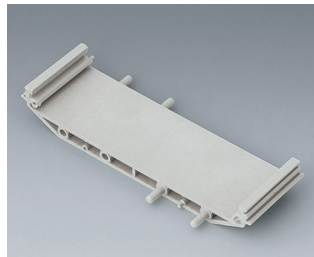
B6724332
RAILTEC SUP. 72, partie intermédiaire
PA 6 (30) (UL 94 V-0)
gris clair
82x45x16mm



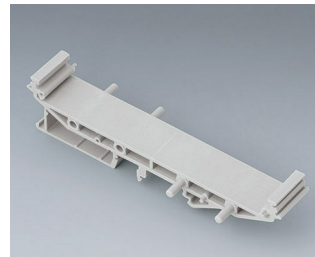
B6724337
RAILTEC SUP. 72, pied
PA 6 (30) (UL 94 V-0)
gris clair



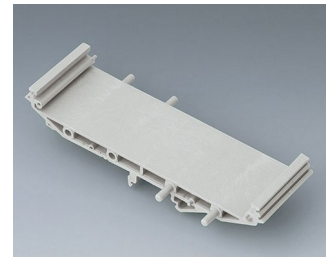
B6724440
RAILTEC SUP. 107, partie intermédiaire
PA 6 (30) (UL 94 V-0)
gris clair
118x18,5x17,5mm



B6724441
RAILTEC SUP. 107, partie intermédiaire
PA 6 (30) (UL 94 V-0)
gris clair
118x35x17,5mm

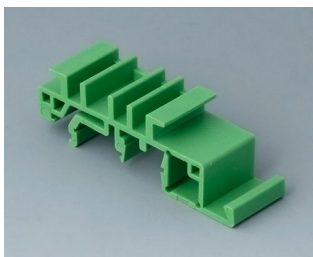


B6724442
RAILTEC SUP. 107, p. intermédiaire + pied
PA 6 (30) (UL 94 V-0)
gris clair
118x18,5x27,5mm



B6724443
RAILTEC SUP. 107, p. intermédiaire + pied
PA 6 (30) (UL 94 V-0)
gris clair
118x35x27,5mm

Accessoires "muraux/support"



B6811542
Adaptateur
PA 6 (UL 94 V-0)
vert



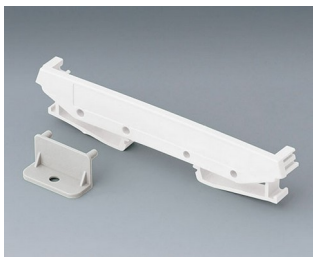
B6824532
Jeu de support mural SUP. 72
PA 6 (30) (UL 94 V-0)
gris clair



B6824533
Jeu de support mural avec pied, SUP. 72
PA 6 (30) (UL 94 V-0)
gris clair



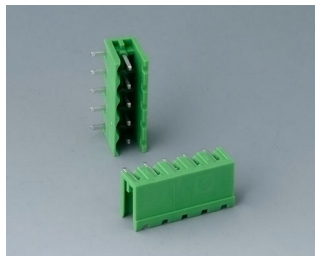
B6824542
Jeu de support mural SUP. 107
PA 6 (30) (UL 94 V-0)
gris clair



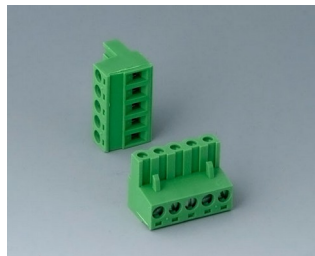
B6824543
Jeu de support mural avec pied, SUP. 107
PA 6 (30) (UL 94 V-0)
gris clair

RAILTEC C

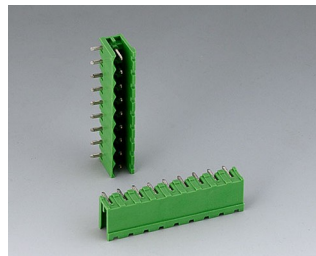
Accessoires "bornes"



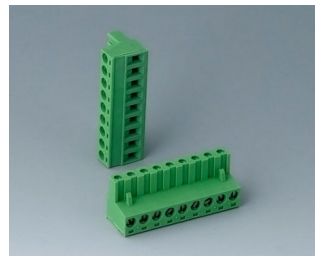
B6601222
Réglette à broches, grille 5,08
PA 6 (UL 94 V-0)



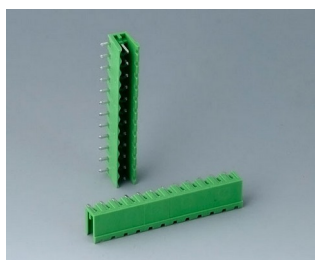
B6601223
Réglette à broches, grille 5,08
PA 6 (UL 94 V-0)



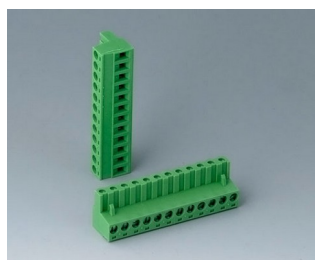
B6602222
Réglette à broches, grille 5,08
PA 6 (UL 94 V-0)



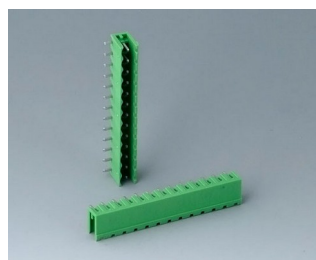
B6602223
Réglette à broches, grille 5,08
PA 6 (UL 94 V-0)



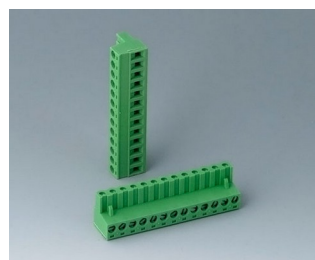
B6603222
Réglette à broches, grille 5,08
PA 6 (UL 94 V-0)



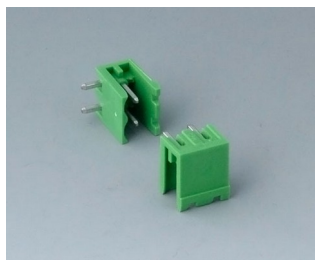
B6603223
Réglette à broches, grille 5,08
PA 6 (UL 94 V-0)



B6605222
Réglette à broches, grille 5,08
PA 6 (UL 94 V-0)



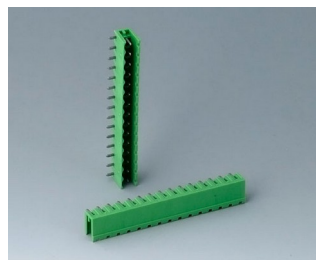
B6605223
Réglette à broches, grille 5,08
PA 6 (UL 94 V-0)



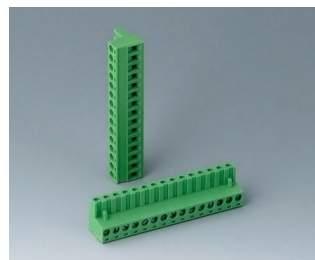
B6606222
Réglette à broches, grille 5,08
PA 6 (UL 94 V-0)



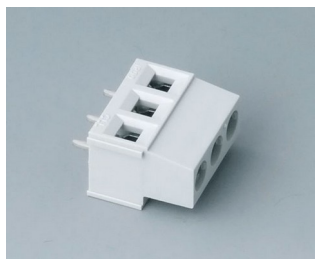
B6606223
Réglette à broches, grille 5,08
PA 6 (UL 94 V-0)



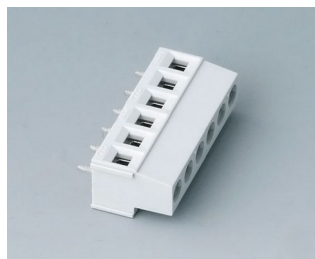
B6607222
Réglette à broches, grille 5,08
PA 6 (UL 94 V-0)



B6607223
Réglette à broches, grille 5,08
PA 6 (UL 94 V-0)



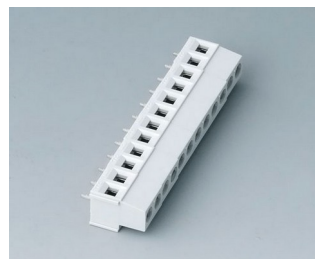
B6800650
Borne à circuit imprimé, grille
5,08
PA 68 (UL 94 V-0)
gris clair



B6801650
Borne à circuit imprimé, grille
5,08
PA 68 (UL 94 V-0)
gris clair

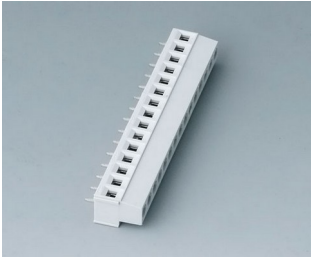


B6802650
Borne à circuit imprimé, grille
5,08
PA 68 (UL 94 V-0)
gris clair



B6803650
Borne à circuit imprimé, grille
5,08
PA 68 (UL 94 V-0)
gris clair

RAILTEC C



B6804650
Borne à circuit imprimé, grille
5,08
PA 68 (UL 94 V-0)
gris clair

Accessoires "couvre-bornes"



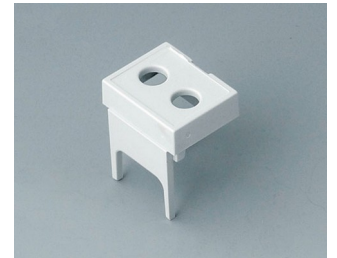
B6800111
Couvre-bornes, fermé
PC (UL 94 V-0)
gris clair



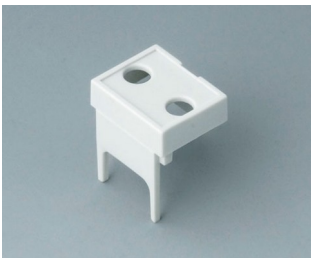
B6800112
Couvre-bornes, avec
perforations, 5,08
PC (UL 94 V-0)
gris clair



B6800113
Couvre-bornes, avec alésages,
5,08
PC (UL 94 V-0)
gris clair



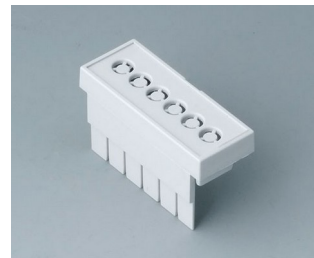
B6800114
Couvre-bornes, avec alésages,
7,5 & 7,62
PC (UL 94 V-0)
gris clair



B6800115
Couvre-bornes, avec alésages,
10,16
PC (UL 94 V-0)
gris clair



B6801111
Couvre-bornes, fermé
PC (UL 94 V-0)
gris clair



B6801112
Couvre-bornes, avec
perforations, 5,08
PC (UL 94 V-0)
gris clair



B6801113
Couvre-bornes, avec alésages,
5,08
PC (UL 94 V-0)
gris clair



B6801114
Couvre-bornes, avec alésages,
7,5 & 7,62
PC (UL 94 V-0)
gris clair



B6801115
Couvre-bornes, avec alésages,
10,16
PC (UL 94 V-0)
gris clair



B6802111
Couvre-bornes, fermé
PC (UL 94 V-0)
gris clair



B6802112
Couvre-bornes, avec
perforations, 5,08
PC (UL 94 V-0)
gris clair

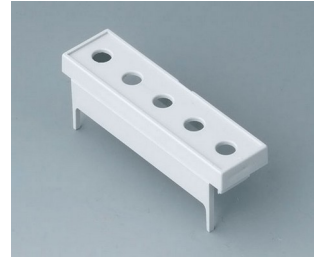
RAILTEC C



B6802113
Couvre-bornes, avec alésages,
5,08
PC (UL 94 V-0)
gris clair



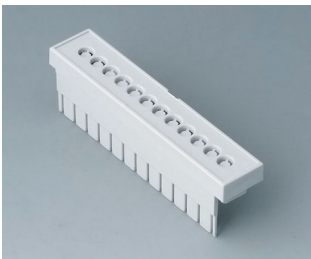
B6802114
Couvre-bornes, avec alésages,
7,5 & 7,62
PC (UL 94 V-0)
gris clair



B6802115
Couvre-bornes, avec alésages,
10,16
PC (UL 94 V-0)
gris clair



B6803111
Couvre-bornes, fermé
PC (UL 94 V-0)
gris clair



B6803112
Couvre-bornes, avec
perforations, 5,08
PC (UL 94 V-0)
gris clair



B6803113
Couvre-bornes, avec alésages,
5,08
PC (UL 94 V-0)
gris clair



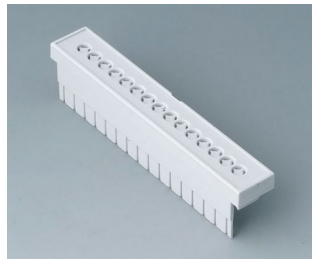
B6803114
Couvre-bornes, avec alésages,
7,5 & 7,62
PC (UL 94 V-0)
gris clair



B6803115
Couvre-bornes, avec alésages,
10,16
PC (UL 94 V-0)
gris clair



B6804111
Couvre-bornes, fermé
PC (UL 94 V-0)
gris clair



B6804112
Couvre-bornes, avec
perforations, 5,08
PC (UL 94 V-0)
gris clair



B6804113
Couvre-bornes, avec alésages,
5,08
PC (UL 94 V-0)
gris clair



B6804114
Couvre-bornes, avec alésages,
7,5 & 7,62
PC (UL 94 V-0)
gris clair



B6804115
Couvre-bornes, avec alésages,
10,16
PC (UL 94 V-0)
gris clair

RAILTEC C

Accessoires



B6800100
Plaque avant, 1 module
PC (UL 94 V-0)
gris clair
14x42mm



B6800200
Plaque avant, 1 module
PC (UL 94 V-0)
transparent
14x42mm



B6801100
Plaque avant, 2 modules
PC (UL 94 V-0)
gris clair
32x42mm



B6801200
Plaque avant, 2 modules
PC (UL 94 V-0)
transparent
32x42mm



B6802100
Plaque avant, 3 modules
PC (UL 94 V-0)
gris clair
49x42mm



B6802200
Plaque avant, 3 modules
PC (UL 94 V-0)
transparent
49x42mm



B6803100
Plaque avant, 4 modules
PC (UL 94 V-0)
gris clair
67x42mm



B6803200
Plaque avant, 4 modules
PC (UL 94 V-0)
transparent
67x42mm



B6804100
Plaque avant, 5 modules
PC (UL 94 V-0)
gris clair
84x42mm



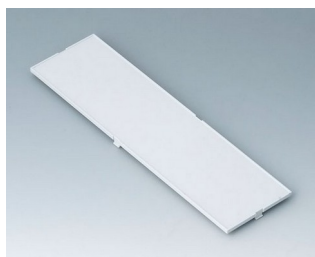
B6804200
Plaque avant, 5 modules
PC (UL 94 V-0)
transparent
84x42mm



B6805100
Plaque avant, 6 modules
PC (UL 94 V-0)
gris clair
102x42mm



B6805200
Plaque avant, 6 modules
PC (UL 94 V-0)
transparent
102x42mm



B6806100
Plaque avant, 9 modules
PC (UL 94 V-0)
gris clair
155x42mm



B6806200
Plaque avant, 9 modules
PC (UL 94 V-0)
transparent
155x42mm



B6807100
Plaque avant, 12 modules
PC (UL 94 V-0)
gris clair
207,5x42mm